



# MONTHLY MEMBERSHIP PROGRESS REPORT

District 2 T2

Results as of: 4/30/2016

GMT: HAL GRIFFIN

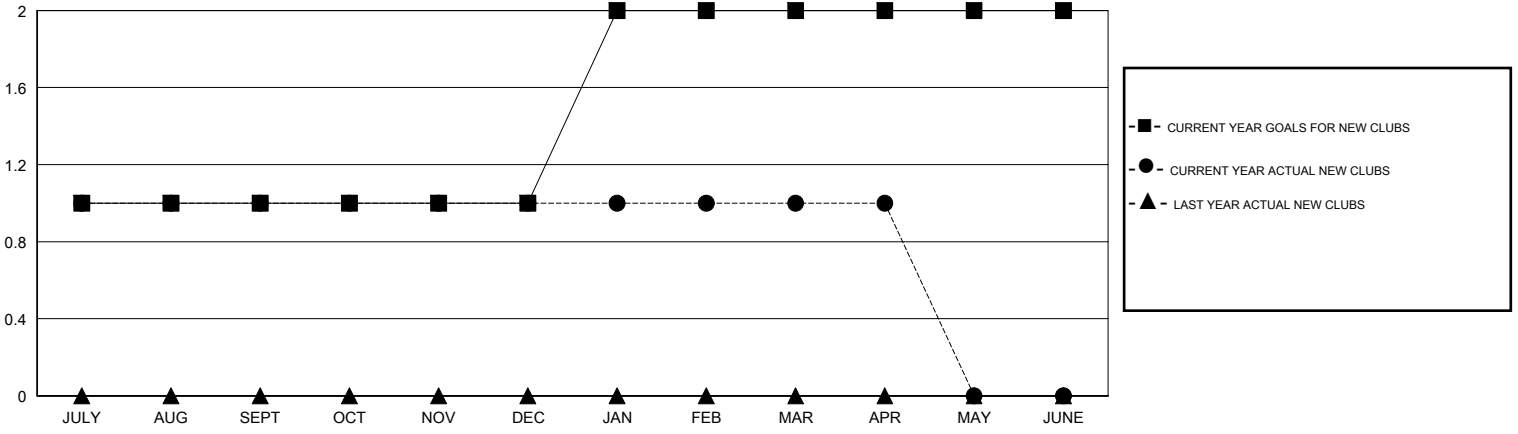
LOCATION TEXAS

GMT CA 1

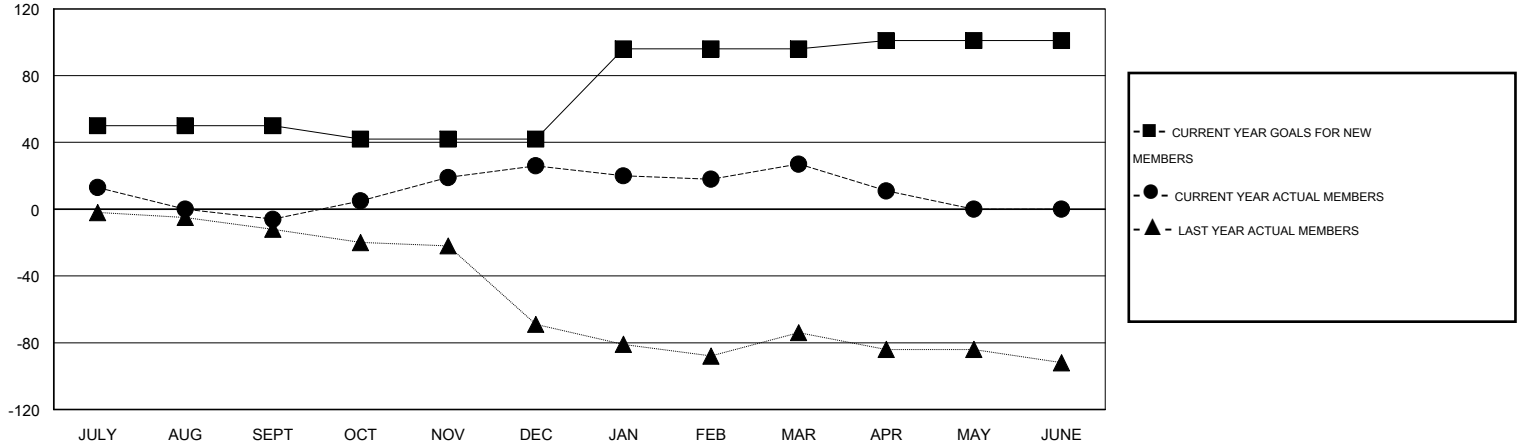
Clubs				
RESULTS FOR 2015-2016				
QUARTER	NEW CLUB GOAL	NEW CLUBS	DROPPED CLUBS	NET GAIN/LOSS
JULY/AUG/SEPT	1	1	0	1
OCT/NOV/DEC	0	0	0	0
JAN/FEB/MAR	1	0	1	-1
APR/MAY/JUNE	0	0	1	-1

Members				
RESULTS FOR 2015-2016				
QUARTER	NEW MEMBER GOAL	CHARTER AND NEW MEMBERS ADDED	DROPPED MEMBERS	NET GAIN/LOSS
JULY/AUG/SEPT	50	51	57	-6
OCT/NOV/DEC	-8	52	20	32
JAN/FEB/MAR	54	47	46	1
APR/MAY/JUNE	5	5	21	-16

GOALS AND ACTUAL NEW CLUBS CUMULATIVE



GOALS AND ACTUAL MEMBERS CUMULATIVE



DROPPED CLUBS: 2
------------------

24 CLUBS OF 45 ADDED 1 OR MORE NEW MEMBERS

GENDER DISTRIBUTION	
MALE	1,009 (76.38%)
FEMALE	312 (23.62%)

DROPPED MEMBERS	
DECEASED	13
CLUB CANCELLED	10
OTHER	121
<b>TOTAL</b>	<b>144</b>

[CLICK HERE FOR HEALTH ASSESSMENT DATA](#)

FAMILY UNIT MEMBERS	110
HEAD OF HOUSEHOLD	54
NON-HEAD OF HOUSEHOLD	56